



## DuraShiner® CV

You already know that automatic tire shining can be a huge money-maker for your wash. But now, that revenue doesn't have to carry the price of high aggravation. The DuraShiner® CV (Conveyor) tire shiner delivers consistent shine, "Rim-to-Tread"<sup>SM</sup> coverage and minimal chemical use, as low as 1 ounce of chemical per vehicle.

To achieve this, the DuraShiner® CV uses 15 dense foam applicator rollers that easily conform to the sidewall for "better than hand-applied" results. These disposable applicator rollers are designed to last 5,000 to 6,000 applications. However, many operators have achieved over 10,000 applications per set with regular rotation. When it's time to replace applicator rollers or rotate their positions, the tool-free boom opens with one hand, allowing job completion in five to seven minutes.

To keep the applicator rollers evenly saturated, the DuraShiner® CV utilizes ChemCycle® technology that rotates the applicator rollers one-quarter turn, at a user-defined interval. This prevents gravity from pulling tire dressing solution to the bottom of the applicators and onto the floor.

What's more, the ChemPress™ automatic priming system eliminates manual priming. The ChemPress™ rollers rotate against the applicator rollers, pulling chemical into the applicator rollers through capillary action, while spreading an even coat of dressing over the applicator surface. And with programmable metering control, chemical waste is virtually eliminated.

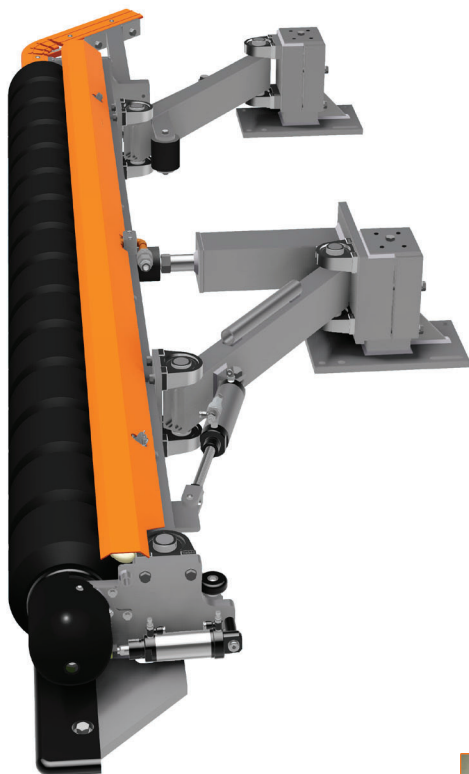
With the DuraShiner® CV, chemical stays on the tire, and off the floor, walls and customers' vehicles. And your profit stays where it belongs – in your pocket!



**BELANGER** 

[belangerinc.com](http://belangerinc.com)

**DRIVE | CLEAN**



**Programmable Chemical Metering**  
Provides flexible control of chemical, eliminating waste and maximizing profit



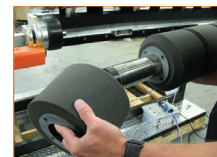
**Dense Foam Applicator Rollers**  
Glide over sidewalls for “better than hand-applied” results; applying chemical evenly for consistent shine



**ChemCycle® Roller Rotation**  
Disperses chemical throughout applicator rollers, keeping it off the floor and walls, while minimizing ‘sling’



**Tool-Free Boom**  
Opens with one hand and swings out to allow 5-minute replacement of individual disposable applicator rollers



**ChemPress™ Rollers with Auto-Primer**  
Keeps the applicator rollers automatically primed for “Rim-to-Tread”™ coverage



**Fine Tuning Leveling Bolts**  
Raise or lower tire shiner to adjust the applicator roller contact height, or to level machine front-to-back, simplifying your installation



## REQUIREMENTS

### Physical Examples

Component Height	1'
Minimum Tunnel Width Required	14'
Minimum Tunnel Length Required	15' 3" Full Travel

(\*May be installed fully or partially underneath other compatible pieces of wash equipment) Consult factory for details.

### Utility Examples

Electrical	(1) program function 120 VAC from Controller (1) 120 VAC constant from Controller
Pneumatic	1/4" airline @ 90 PSI minimum, 120 PSI maximum

Belanger  
1001 Doheny Court  
P.O. Box 5470  
Northville, MI 48167-5470 USA  
[belangerinc.com](http://belangerinc.com) | 248-349-7010

