



## DuoScrubber®

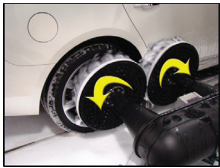
The dual-purpose DuoScrubber® cleans tires, wheels, and the lower body in just five feet of tunnel space. Which means the DuoScrubber® can replace both rocker brushes and tire scrubbers, in one compact unit – to free up space for other revenue-generating equipment and help maximize your Profit-Per-Foot™.

Its two counter-rotating disks wash the way you would, with a low-RPM hand washing type of motion made more efficient for production line speed. This action cleans the leading and trailing edges of vehicle surfaces equally well, while the flexible B-Pad™ backers ensure the disks bend, flex, and contour every surface, including “off road” tires and stubborn running boards – regardless of vehicle size.

The built-in foamer blankets the wash media and vehicle with foaming soap, while the Krinkle™ cut foam fingers attack stubborn soils, keeping dirt away from the vehicle until it's safely rinsed. What's more, the bi-level media delivers multi-faceted wheel cleaning – including deep between wheel spokes.

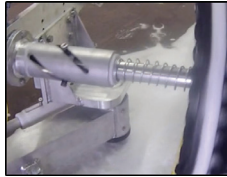


# DuoScrubber®



**Cleans Wheels & Lower Body With A Hand-Wash Motion** using two counter-rotating disks with soft foam fingers

**Installs Easily, With All-Electric Drive** ensures easy hook-up and no hydraulic leaks — ever



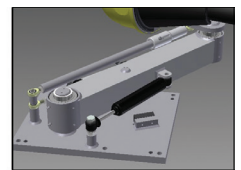
**Maintains Ideal Cleaning Pressure,** with precise air pressure and resistance-sensing Torque Converter™

**Contours Every Surface With Flexible B-Pads™** including oversized off-road tires & running boards



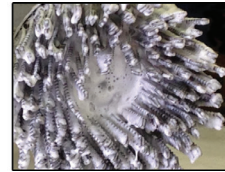
**Cleans Deep Between Wheel Spokes** with bi-level wash media

**Brings The Clean To The Vehicle™,** as Size & Align™ frame adjusts to the car



**Chases Dirt Off The Paint & Keeps It Away** with Krinkle™ cut foam fingers that attack soil & keep dirt away until it's safely rinsed

**Built-In Foamer** blankets wash media & vehicle surfaces with a cushion of foaming soap



## REQUIREMENTS

### Physical Examples

Tunnel Space Required	5'
Unit Height	2' 3"
Unit Width	14' 10"

### Utility Examples

Electrical Requirements	(4) 1/2HP, 3-Phase, 208/240/460/575 VAC (2) 120 VAC control outputs (3A minimum)
Water	1/2" Main Water Feed (2.4 GPM output)
Air	1/2" Main Feed (1.5 SCFM output)



Belanger  
1001 Doheny Court  
P.O. Box 5470  
Northville, MI 48167-5470 USA  
[belangerinc.com](http://belangerinc.com) | 248-349-7010

©2020 Belanger Inc. Belanger, Inc. reserves the right to revise specifications, features or designs, and to change or discontinue models at any time without notice or obligation. Prices subject to change without notice.

**BELANGER** 

PART OF  
**OPW**   
VEHICLE WASH  
SOLUTIONS  
a  DOVER company

DRIVE | CLEAN